

Summary of Remedial Investigation Report – Area of Interest 1 (AOI 1)

Philadelphia Refining Complex 3144 Passyunk Avenue, Philadelphia, PA 19145

What is in this summary?

This document provides a plain language summary of the Area of Interest 1 (AOI 1) 2016 Remedial Investigation Report (RIR). The AOI 1 RIR was prepared as part of the Pennsylvania Department of Environmental Protection (PADEP) Act 2 cleanup program. The AOI 1 RIR focuses on a portion of the Refinery, as described in the general description below. The location of AOI 1 is identified on the maps of Figures 1 & 2 below.

The AOI 1 RIR is a technical report which describes the condition of the land in AOI 1 as of 2016, historic processes, the chemicals present from past operations, and the next steps in the Act 2 process. The complete AOI 1 RIR can be downloaded at <https://phillyrefinerycleanup.info/act-2-documents/#aoi-1>.

To assist in the review of this and the other RIR summaries, Evergreen has also prepared a companion summary document titled “Overview of Former Sunoco Philadelphia Refinery Environmental Investigations” that describes the Act 2 process and what to expect to find in a RIR.

Commonly Used Terms

A few of the most common technical terms used in the AOI 1 report are explained below:

Act 2 Statewide Health Standards – The PADEP has set Act 2 Statewide health standards for soil and groundwater that are protective of human health and the environment. Additional investigation is not required if a chemical is detected at a level at or below the Act 2 standard.

Delineation – When a chemical is detected in soil or groundwater at a level above the Act 2 standard, additional samples are collected nearby to map the extent of the levels above the Act 2 standard. Delineation shows the extent of the chemical concentrations that are above the Act 2 standard.

Geology – The soils and rock (referred to as bedrock) beneath the Site. The soils were deposited over long periods of time. Soils are described by geologic units (or groupings of soils), which represent similar soils. Soils placed by humans rather than natural processes are called “fill”. Fill was used to make the land higher in order to build the Site, including AOI 1. Understanding the geology is important because it can influence how the chemicals in the ground will be found or move in the ground and in groundwater.

Groundwater – Groundwater is the water that is present in the spaces between grains of soil or rock. Groundwater is not an underground lake or stream, but it does flow from one area to another. Different groundwater units can be separated from one another if there are layers of soils that are packed very closely together, like a clay, between two groundwater units. Within AOI 1, there are two groundwater units, which are referred to as the shallow and the deep groundwater. Similar to the geology, understanding groundwater is important because it can influence where the chemicals will be found or move over time. If chemicals are present in an area of groundwater, it is referred to as a groundwater plume.

Lead Site Specific Standard – The PADEP has approved a site specific standard (SSS) for lead of 2,240 milligrams per kilogram (mg/kg). The calculation of the SSS was based on updated procedures by the EPA and PADEP and not due to conditions in AOI 1.

Light Non-Aqueous Phase Liquid (LNAPL) – LNAPL is a petroleum hydrocarbon, oil for example, that floats on water. When LNAPL is found in an area of the soil or groundwater it is referred to as an LNAPL plume.

Potential Exposure Pathways – A potential exposure pathway is the way a receptor (for example a worker) may become exposed to a chemical in soil, groundwater, or indoor air. A complete exposure pathway is when there is chemical present that can come into contact with a receptor and no barriers exist to prevent contact. A complete exposure pathway, for example, could be present if a worker could touch soils that have unacceptable levels of a chemical. In addition to considering various human receptors, an ecological assessment was also completed for AOI 1 for ecological receptors (birds, plants, etc.).

Commonly Used Terms Continued

Remediation – Remediation is the cleanup up of contamination in soil or groundwater. An example of remediation is pumping LNAPL and groundwater out of wells to a treatment plant. An example of soil remediation is excavation, removal, and disposal of soil in a permitted landfill. All current remediation in AOI 1 is called “interim” since an Act 2 Cleanup Plan has not been submitted. Other, permanent, remedial actions can include construction of surface caps as a barrier to chemicals in soil and groundwater, installation of vapor mitigation systems in buildings, and land use restrictions to prevent exposures.

Vapor Intrusion- Vapors from chemicals in soil or groundwater can move upwards as vapor and move into indoor air in buildings. In addition to collection of soil and groundwater samples, the remedial investigation collected indoor air samples from occupied buildings in AOI 1. The remedial investigation also collected outdoor air samples right above LNAPL plumes to see if there was any upward vapor movement from the LNAPL areas and ambient outside air samples to see what the background concentrations were. These samples are different than the air samples that were collected by the refinery to look at impacts.

General Description of Area of Interest 1

AOI 1 covers approximately 67 acres and is located on the eastern side of the Schuylkill River along 26th Street. The Belmont Terminal for distribution of finished petroleum products is located at Passyunk Avenue, north of and adjacent to AOI 1. The location of AOI 1 is shown on **Figure 1** and **Figure 2**. Some key features are:

- AOI 1 currently contains about 35 aboveground storage tanks grouped in two tank farms. Releases from tanks are investigated under the PADEP’s Storage Tank Corrective Action Program by collecting soil and groundwater data from around the tanks. The results of the storage tank investigations are included in the AOI 1 RIR.
- The aboveground storage tanks have been used primarily to store petroleum products such as gasoline and diesel, petroleum distillates such as naphtha, and gasoline additives used for blending.
- The current and future anticipated use of AOI 1 is for non-residential purposes.
- The geology beneath AOI 1 is fill, clay, sand, gravel, and bedrock.
- The shallow groundwater, also called the water-table aquifer, starts at about 25 feet below the ground surface and extends down to where there is a layer of clay in most places. Shallow groundwater flows towards the south and east. The deep groundwater, also called the lower aquifer, starts beneath the clay and flows generally towards the south and east (toward the Delaware River).

Figure 1. AOI 1



Figure 2. Areas Surrounding AOI 1



What was found during the Act 2 investigations in AOI 1?

LNAPL, soil, groundwater, and air samples (indoor air and outdoor air above LNAPL plumes) were collected as part of the remedial investigation. The results of the sampling are:

- **LNAPL** – Thirty LNAPL samples were collected from monitoring wells in AOI 1. The results of this sampling show that LNAPL consists of mostly weathered gasoline and diesel, likely from the tank areas in AOI 1 or the neighboring Belmont Terminal. There are no Act 2 Statewide standards for LNAPL; instead LNAPL's effect on soil or groundwater is evaluated by the Act 2 standards. The LNAPL was found to exist in the areas shaded in blue on **Figure 3**. The plumes are considered stable, or unchanging in size or location, except a small area on the eastern side next to 26th Street, which is addressed by a remedial system, as shown on **Figure 3** (see pink area). LNAPL is delineated in various areas, as shown in **Figure 3** (see blue shaded areas on map).
- **Soil** – A total of 250 soil samples were collected from soil borings and during the installation of monitoring wells. The sample results were compared to the Act 2 Statewide standards and the results are shown on **Figure 4** (Green dots are samples with no exceedances, orange dots are samples with exceedances of any chemical analyzed). The chemicals detected at concentrations over the Act 2 Statewide standards included benzene, methyl tertiary butyl ether (MTBE), 1,2,4-trimethylbenzene, 1,3,5-trimethylbenzene, naphthalene, toluene, xylenes, and lead. Four samples exceeded the site-specific standard for lead. All of the chemicals that were found at levels over the standards are chemicals common to refinery operations.
- **Groundwater** – Over 160 monitoring wells had over 10,000 measurements to determine the direction of groundwater flow. More than 1,200 groundwater samples have been collected from monitoring wells in AOI 1 and from off site monitoring wells located adjacent to AOI 1 (some of the offsite wells are associated with other Act 2 Sites). Impacted groundwater beneath AOI 1 is not likely to migrate under nearby residential areas. The chemicals that have been detected above the Act 2 Statewide standards are:
 - **Shallow Groundwater** – (from around 25 feet below ground surface to a layer of clay that separates the aquifers) benzene, 1,2-dichloroethane, ethylbenzene, ethylene dibromide, MTBE, toluene, 1,2,4-trimethylbenzene, 1,3,5-trimethylbenzene, xylenes, benzo(a)anthracene, benzo(a)pyrene, benzo(b)fluoranthene, chrysene, naphthalene, and lead
 - **Deep Groundwater** – benzene, lead, and MTBE
- **Figure 5** shows the locations of the monitoring wells where groundwater samples have been collected in relation to the Act 2 Statewide standards (green dots mean no exceedances, orange dots are wells with exceedances of any chemical analyzed). Similar to the soil data, all of the compounds detected over the Act 2 Statewide standard in groundwater are common to refinery operations and are consistent with past operations.
- **Air** – Six air samples were collected in AOI 1. The air samples were indoor air samples collected in occupied buildings in AOI 1, ambient (background) outdoor air samples and outdoor air samples above LNAPL plumes. The sampling results were compared to the Act 2 standards, Environmental Protection Agency Regional Screening Levels (EPA RSL), standards from the Occupational Safety and Health Administration (OSHA) and the National Institute for Occupational Safety and Health (NIOSH). The indoor air samples were below all of these standards with the exception of the EPA RSL.

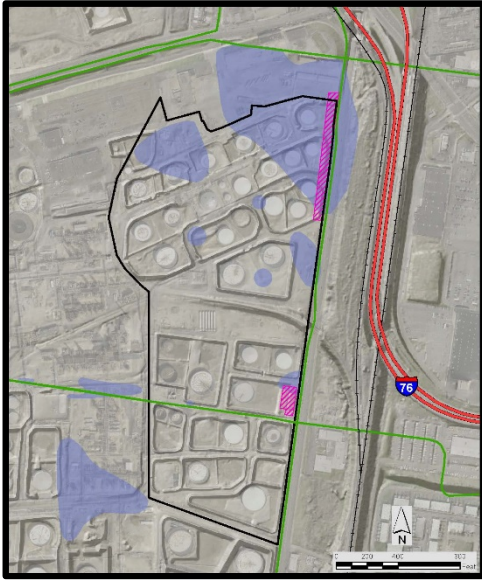


Figure 3. LNAPL Delineation



Figure 4. Soil Samples



Figure 5. GW Samples

The full AOI 1 RIR has large-scale figures that illustrate the information collected in AOI 1 that are easier to read, as well as the complete data tables that have all laboratory results compared to the Act 2 standards. The full AOI 1 RIR also summarizes how much of the chemicals are present in AOI 1, including the extent of the benzene in groundwater, and the associated monitoring wells.

Discussion of Potential Exposure Pathways

Chemicals detected in soil, groundwater, and air include chemicals commonly associated with refinery operations. Potential human risks from AOI 1 are primarily from direct exposure to site soils, LNAPL, or offsite migration of groundwater. These conditions were addressed by interim remedial actions during the remedial investigation. LNAPL, soil, and groundwater conditions at AOI 1 will be further evaluated in future Act 2 submittals based upon Site redevelopment, and any potential human risks will be addressed by the final remedial actions.

Ecological Assessment

An ecological assessment was completed as part of the RIR following the Act 2 process which included database searches and communication with state and federal agencies. No ecological receptors (for example endangered birds or plants) were identified in AOI 1. In addition, sitewide ecological risk assessment activities have been completed and will be reported in future Act 2 submittals.

Remediation Summary

Currently, Evergreen operates two remediation systems in AOI 1 (see pink area on **Figure 3**). Below is a brief summary for each system. See the RIR for additional details relating to the systems and operation. The future Cleanup Plan (submitted after all RIRs are approved) will fully summarize all remediation systems at the facility including anticipated duration of operation.

- The 26th Street North Remediation System is located along the property boundary with 26th Street and pumps out groundwater and LNAPL through a network of 15 wells. From its installation in 1995 through 2016 (time of RIR submittal), this system removed approximately 65 million gallons of groundwater and more than 60,000 gallons of LNAPL by pumping from recovery wells and treating the material in a waste water treatment plant.

-
- The Packer Avenue and 26th Street Ventilation System and Biofilter System were designed to pull and treat vapors from the Packer Avenue/Pollock Street and 26th Street Intercepting sewers. The system also remediates vapors in the sewer that may come from offsite contamination sources in the area, including the former Defense Supply Center Philadelphia. The system began operating in 1998 and was rehabilitated in 2015/2016. These remediation systems are designed to control vapors and odors coming from the sewers.

Conclusion

Based on the completed investigation activities, LNAPL and associated impacts to soil, groundwater, and air within AOI 1 have been investigated consistent with the requirements set forth in Act 2. The AOI 1 RIR identified that a combination of statewide health standards and site specific standards are under consideration for AOI 1. Any sampling or remediation activities conducted within AOI 1 since submittal of the RIR will be included in future reports.

The PADEP and EPA reviewed the 2016 AOI 1 RIR, and it was approved by PADEP on November 1, 2016.

Note: This document has been prepared to provide a plain-language description of the information included in the RIR for AOI 1 (Stantec, 2016). The RIR was prepared for Area of Interest 1 (AOI 1) of the Philadelphia Energy Solutions Refining and Marketing LLC (PES) Philadelphia Refining Complex (Complex) and includes information provided in and collected up to the time of the RIR submittal. The report was prepared for Evergreen Resources Group, LLC (Evergreen). Evergreen is responsible for managing the investigation and cleanup of the legacy (pre-PES ownership) environmental impacts at the former Sunoco South Philadelphia Refinery, which is now known as the PES Complex. Per Section 901 of the Pennsylvania Land Recycling and Environmental Remediation Standards Act, this document was prepared to enhance the opportunity for public involvement through establishment of a basic understanding of the remedial investigation process. This summary document does not constitute a Remedial Investigation Report, nor does it contain all the information provided in the referenced report. The full RIR can be accessed at www.phillyrefinerycleanup.info.