

## Summary of Remedial Investigation Report – Area of Interest 2 (AOI 2)

Philadelphia Refining Complex  
3144 Passyunk Avenue, Philadelphia, PA 19145

### What is in this summary?

This document provides a plain language summary of the Area of Interest 2 (AOI 2) 2017 Remedial Investigation Report (RIR). The AOI 2 RIR was prepared as part of the Pennsylvania Department of Environmental Protection (PADEP) Act 2 Voluntary Cleanup Program. The AOI 2 RIR focuses on a portion of the Refinery, as described in the general description below. The location of AOI 2 is identified on the maps of Figures 1 & 2 below.

The AOI 2 RIR is a technical report which describes the condition of the land in AOI 2 as of 2017, historic processes, the chemicals present from past operations, and the next steps in the Act 2 process. The complete AOI 2 RIR can be downloaded at <https://phillyrefinerycleanup.info/act-2-documents/#aoi-2>.

To assist in the review of this and the other RIR summaries, Evergreen has also prepared a companion summary document titled “Overview of Former Sunoco Philadelphia Refinery Environmental Investigations” that describes the Act 2 process and what to expect to find in a RIR.

### Commonly Used Terms

A few of the most common technical terms used in the AOI 2 report are explained below:

**Act 2 Statewide Health Standards** – The PADEP has set Act 2 Statewide Health Standards for soil and groundwater that are protective of human health and the environment. Additional investigation is not required if a chemical is detected at a level at or below the Act 2 standard.

**Delineation** – When a chemical is detected in soil or groundwater at a level above the Act 2 standard, additional samples are collected nearby to map the extent of the levels above the Act 2 standard. Delineation shows the extent of the chemical concentrations that are above the Act 2 standard.

**Geology** – The soils and rock (referred to as bedrock) beneath the Site. The soils were deposited over long periods of time. Soils are described by geologic units (or groupings of soils), which represent similar soils. Soils placed by humans rather than natural processes are called “fill”. Fill was used to make the land higher in order to build the Site, including the land in AOI 2. Understanding the geology is important because it can influence how the chemicals in the ground will be found or move in the ground and in groundwater.

**Groundwater** – Groundwater is the water that is present in the spaces between grains of soil or rock. Groundwater is not an underground lake or stream, but it does flow from one area to another. Different groundwater units can be separated from one another if there are layers of soils that are packed very closely together, like a clay, between two groundwater units. Within AOI 2, there are two groundwater units, which are referred to as the shallow and the deep groundwater. Similar to the geology, understanding groundwater is important because it can influence where the chemicals will be found or move over time. If chemicals are present in an area of groundwater it is referred to as a groundwater plume.

**Lead Site Specific Standard** - The PADEP has approved a site-specific standard (SSS) for lead of 2,240 milligrams per kilogram (mg/kg). The calculation of the SSS was based on updated procedures by the EPA and PADEP and not due to conditions in AOI 2.

**Light Non-Aqueous Phase Liquid (LNAPL)** LNAPL is a petroleum hydrocarbon, oil for example, that floats on water. When LNAPL is found in an area of the soil or groundwater it is referred to as an LNAPL plume.

**Potential Exposure Pathways** – A potential exposure pathway is the way a receptor (for example a worker) may become exposed to a chemical in soil, groundwater or indoor air. A complete exposure pathway is when there is chemical present that can come into contact with a receptor and no barriers exist to prevent contact. A complete exposure pathway, for example, could be present if a worker could touch soils that have unacceptable levels of a chemical. In addition to considering various human receptors, an ecological assessment was also completed for AOI 2 for ecological receptors (birds, plants, etc.).

## Commonly Used Terms Continued

**Remediation** – Remediation is the cleanup up of contamination in soil or groundwater. An example of remediation is pumping LNAPL and groundwater out of wells to a treatment plant. An example of soil remediation is excavation, removal, and disposal of soil in a permitted landfill. All current remediation in AOI 2 is called “interim” since an Act 2 Cleanup Plan has not been submitted. Other, permanent, remedial actions can include construction of surface caps as a barrier to chemicals in soil and groundwater, installation of vapor mitigation systems in buildings, and land use restrictions to prevent exposures.

**Vapor Intrusion**- Vapors from chemicals in soil or groundwater can move upwards as vapor and move into indoor air in buildings. In addition to collection of soil and groundwater samples, the remedial investigation collected indoor air samples from occupied buildings in AOI 2. The remedial investigation also collected outdoor air samples right above LNAPL plumes to see if there was any upward vapor movement from the LNAPL areas and ambient outside air samples to see what the background concentrations were. These samples are different than the air samples that were collected by the refinery to look at impacts.

## General Description of Area of Interest 2

AOI 2 covers approximately 111 acres and is located on the eastern side of the Schuylkill River bordered by Passyunk Avenue to the north. AOI 2 is also known as the Point Breeze Processing area. The area is used for petroleum product processing, storage, and contains active dock for loading/offloading of refined products. The location of AOI 2 is shown on **Figure 1** and **Figure 2**. Some key features are described below.

- AOI 2 currently contains about 18 aboveground storage tanks. Releases from tanks are investigated under the PADEP’s Storage Tank Corrective Action Program by collecting soil and groundwater data from around the tanks. The results of the storage tank investigations are included in the AOI 2 RIR.
- The aboveground storage tanks have been used primarily to store petroleum products such as gasoline and diesel, petroleum distillates such as naphtha, and gasoline additives used for blending.
- The current and future anticipated use of AOI 2 is for non-residential purposes.
- The geology beneath AOI 2 is fill, clay, sand, gravel and bedrock.
- The shallow groundwater, also called the water-table aquifer, starts at about 20 feet below the ground surface and extends down to where there is a layer of clay in most places. Some of the shallow groundwater flows towards the west (toward the Schuylkill River) and some of it flows towards the south. The deep groundwater, also called the lower aquifer, starts beneath the clay and flows generally towards the south (toward the Delaware River).

**Figure 1. AOI 2**



**Figure 2. Areas Surrounding AOI 2**



---

## What was found during the Act 2 investigations in AOI 2?

Soil, groundwater and air samples (indoor air and outdoor air above LNAPL plumes) were collected as part of the remedial investigation. The results of the sampling are:

- **LNAPL** – Fourteen LNAPL samples were collected from monitoring wells in AOI 2. The results of this sampling show that LNAPL consists of mostly weathered of light distillates, mixes of light/middle distillates, middle distillates, and heavy distillate. The majority of LNAPL in AOI 2 is located in the area of the Pollock Street remedial systems and is actively being controlled and recovered, as shown on **Figure 3** (see pink hatched area). There are no Act 2 Statewide standards for LNAPL, instead LNAPL's effect on soil or groundwater is evaluated by the Act 2 Statewide standards. The LNAPL was found to exist in the areas shaded in blue on **Figure 3**. The plumes are considered stable, or unchanging in size or location, except middle distillate plume in the northwest of the AOI. LNAPL is delineated to various areas, as shown in **Figure 3** (see blue shaded areas on map).
- **Soil** – A total of 140 soil samples were collected from soil borings and during the installation of monitoring wells. The sample results were compared to the Act 2 Statewide Health Standards and the results are shown on **Figure 4** (Green dots are samples with no exceedances, orange dots are samples with exceedances of any chemical analyzed). The chemicals detected at concentrations over the Act 2 Statewide standards include benzo(a)pyrene and lead. Four samples exceeded the site-specific standard for lead. Compounds that were found at levels over the standards are chemicals common to refinery operations.
- **Groundwater** – Over 170 monitoring wells have had over 5,500 measurements to determine the direction of groundwater flow. More than 330 groundwater samples have been collected from monitoring wells in AOI 2. The groundwater impacts from AOI 2 do not extend under residential areas. The chemicals that have been detected above the Act 2 Statewide Health Standards are:
  - **Shallow Groundwater** – (from around 20' below the ground down to a layer of clay that separates the aquifers) 1,2,4-trimethylbenzene, 1,3,5-trimethylbenzene, benzene, ethylbenzene, ethylene dibromide (EDB), methyl tertiary butyl ether (MTBE), toluene, xylene, anthracene, benzo(a)anthracene, benzo(a)pyrene, benzo(b)fluoranthene, benzo(g,hi,)perylene, chrysene, naphthalene, phenanthrene, pyrene, and lead.
  - **Deep Groundwater** – Prior to 2016, lead, 1,2,4-TMB, benzene, benzo(a)anthracene, benzo(a)pyrene, benzo(b)fluoranthene, and naphthalene. No compounds were detected above Act 2 Statewide standards during subsequent sampling events.
- **Figure 5** shows the locations of the monitoring wells where groundwater samples have been collected in relation to the Act 2 Statewide Health Standards (green dots mean no exceedances, orange dots are wells with exceedances of any chemical analyzed). Similar to the soil data, all of the compounds detected over the Act 2 Statewide Health Standard in groundwater are common to refinery operations and are consistent with past operations.
- **Air** – Twenty-seven air samples were collected in AOI 2. The air samples were indoor air samples collected in occupied buildings in AOI 2, ambient (background) outdoor air samples and outdoor air samples above LNAPL plumes. The sampling results were compared to the Act 2 Statewide Health Standards, Environmental Protection Agency Regional Screening Levels (EPA RSL), standards from the Occupational Safety and Health Administration (OSHA), and the National Institute for Occupational Safety and Health (NIOSH). The indoor air samples were below all of these standards with the exception of the EPA RSL.

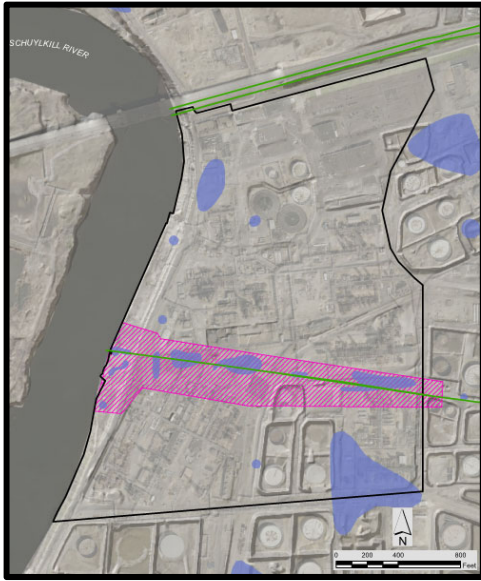


Figure 3. LNAPL Delineation

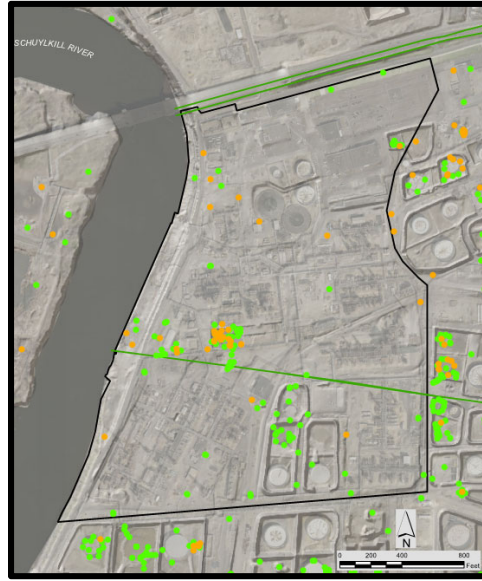


Figure 4. Soil Samples

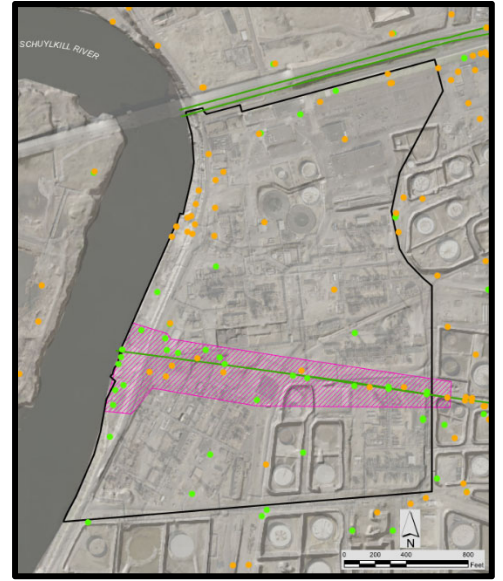


Figure 5. GW Samples

The full AOI 2 RIR has large-scale figures that illustrate the information collected in AOI 2 that are easier to read, as well as the complete data tables that have all of the laboratory results compared to the Act 2 Health Standards. The full AOI 2 RIR also summarizes how much of the chemicals are present in AOI 2, including the extent of benzene in groundwater, and the associated monitoring wells.

### Discussion of Potential Exposure Pathways

Chemicals detected in soil, groundwater and air include chemicals commonly associated with refinery operations. Potential human health risks from AOI 2 are primarily from direct exposure to site soils, LNAPL or offsite migration of groundwater. These conditions were addressed by interim remedial actions implemented during the remedial investigation. LNAPL, soil and groundwater conditions at AOI 2 will be further evaluated in future Act 2 submittals based upon Site redevelopment and any potential human health risks will be addressed by the final remedial actions.

### Ecological Assessment

An ecological assessment was completed as part of the RIR following the Act 2 process which included database searches and communication with state and federal agencies. No disturbance to ecological receptors (for example endangered birds or plants) was identified in AOI 2. In addition, sitewide ecological risk assessment activities have been completed and will be reported in future Act 2 submittals.

### Remediation Summary

Currently, Evergreen operates two remediation systems in AOI 2 (see **Figure 3**). Below is a brief summary for each system. Please see the RIR for additional details relating to the system and operation. The future Cleanup Plan(s) (submitted after all RIRs are approved) will fully summarize all remediation systems at the facility including their anticipated duration of operation.

- Pollock Street Horizontal Well System is located along the Pollock Street Sewer and pumps out groundwater and LNAPL through a network of three wells. As of the end of December 2016, they system had recovered over 93 million gallons of groundwater and LNAPL, which were processed through the Point Breeze Processing Area Wastewater Treatment Plant.

- 
- The Pollock Street West End System is located along River Road and served to pump out groundwater and LNAPL through a network of 30 wells. As of December 2016, the Pollock Street West End System recovered over 30 million gallons of groundwater and over 60 thousand gallons of LNAPL. Fluids were treated through an oil/water separator and LNAPL processed by the facility. This system was deactivated in December 2016 due to lack of LNAPL in the area of the system.

## Conclusion

Based on the completed investigation activities, LNAPL and associated impacts to soil, groundwater, and air within AOI 2 have been investigated consistent with the requirements set forth in Act 2. The AOI 2 RIR identified that a combination of Statewide Health Standards and Site-Specific Standards are under consideration for AOI 2. Any sampling or remediation activities conducted within AOI 2 since submittal of the RIR will be included in future reports.

The PADEP and EPA reviewed the 2017 AOI 2 RIR and it was approved by PADEP on October 18, 2017.

*Note: This document has been prepared to provide a plain-language description of the information included in the RIR for AOI 2 (Langan, 2017). The RIR was prepared for Area of Interest 2 (AOI 2) of the Philadelphia Energy Solutions Refining and Marketing LLC (PES) Philadelphia Refining Complex (Complex) and includes information provided in and collected up to the time of the RIR submittal. The report was prepared for Evergreen Resources Group, LLC (Evergreen). Evergreen is responsible for managing the investigation and cleanup of the legacy (pre-PES ownership) environmental impacts at the former Sunoco South Philadelphia Refinery, which is now known as the PES Complex. Per Section 901 of the Pennsylvania Land Recycling and Environmental Remediation Standards Act, this document was prepared to enhance the opportunity for public involvement through establishment of a basic understanding of the remedial investigation process. This summary document does not constitute a Remedial Investigation Report, nor does it contain all the information provided in the referenced report. The full RIR can be accessed at [www.phillyrefinerycleanup.info](http://www.phillyrefinerycleanup.info).*